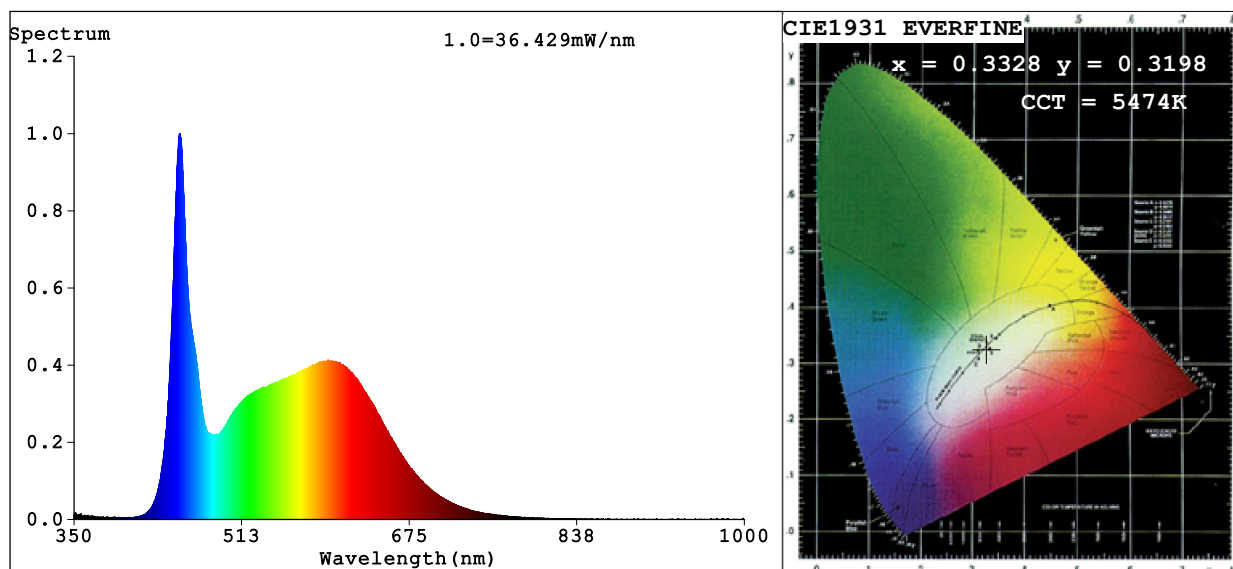


Spectrum Test Report



Color Parameters:

Chromaticity Coordinate: $x=0.3328$ $y=0.3198$ $u'=0.2157$ $v'=0.4663$
CCT=5474K (Duv=-0.0115) Dominant WL:Ld =-556.3nm Purity=4.3%
Ratio:R=17.7% G=76.5% B=5.9%; Peak WL:Lp=452.3nm FWHM=19.1nm
Render Index:Ra=92.4 CRI=89.8 TM30:Rf=85 Rg=102 Lav=552.4nm
R1 =94 R2 =95 R3 =95 R4 =94 R5 =94 R6 =89 R7 =91
R8 =87 R9 =70 R10=92 R11=94 R12=70 R13=95 R14=97 R15=98

Photo Parameters:

Flux = 946.7 lm Eff. : 78.85 lm/W Fe = 3.317 W

Electrical parameters:

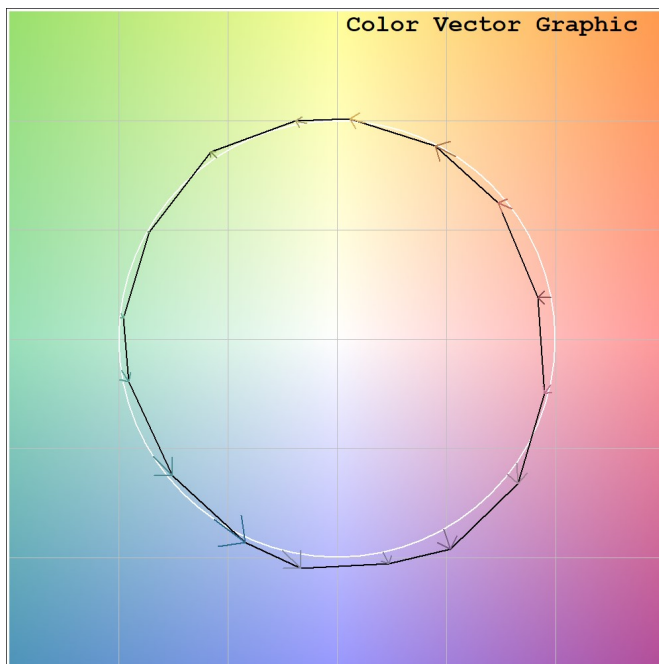
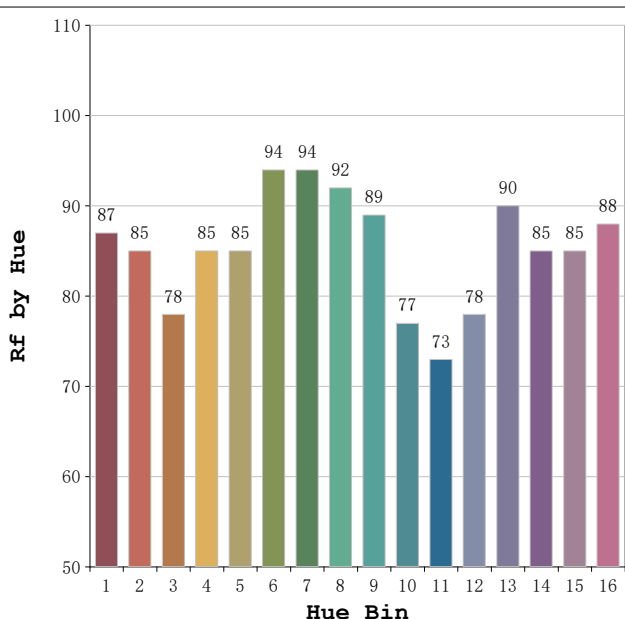
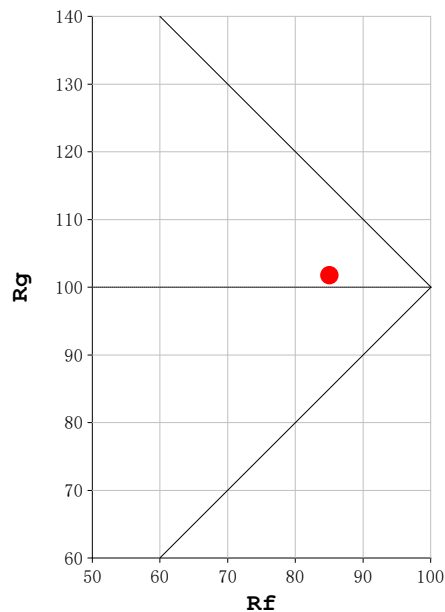
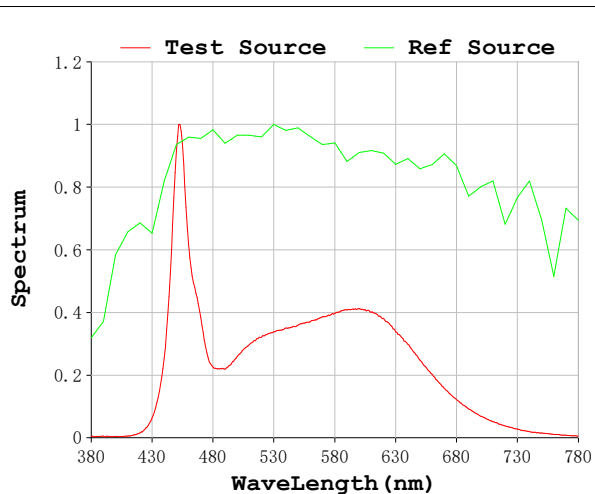
V = 23.998 V I = 0.5003 A P = 12.01 W PF = 1.000

Status: Integral T = 732 ms Ip = 33165 (51%)

Model:Ecoled Neon 3D 60k
Tester:Sergio Caneros
Temperature:27Deg
Manufacturer:Luz Negra S.L.

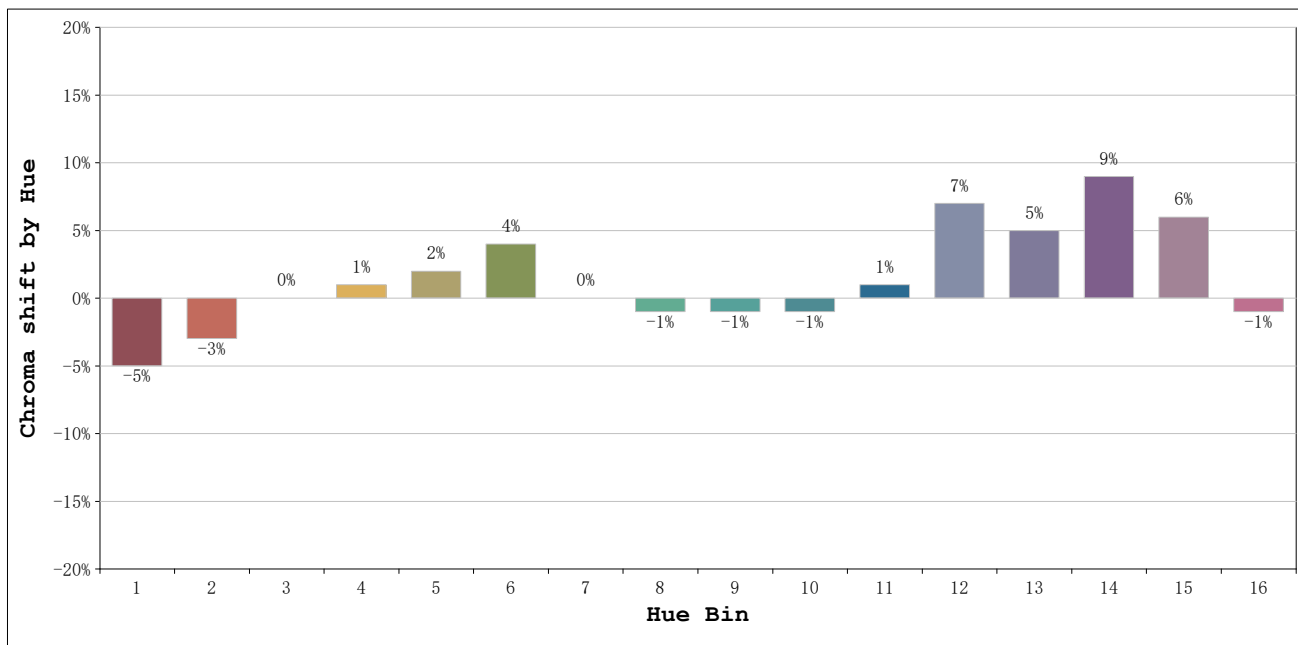
Number: 10.289
Date:2024-11-21 09:52:15
Humidity:35%
Remarks:100cm de Neón

Rf: 85 **CCT: 5474 K** **u': 0.2157**
Rg: 102 **Duv: -0.0115** **v': 0.4663**



Model:Ecoled Neon 3D 60k
 Tester:Sergio Caneros
 Temperature:27Deg
 Manufacturer:Luz Negra S.L.

Number: 10.289
 Date:2024-11-21 09:52:15
 Humidity:35%
 Remarks:100cm de Neón



			Graphic shift(%)	
Hue Bin	Hue Angle	Rf	Chroma	Hue
1	0.0° - 22.5°	87	-5	1
2	22.5° - 45.0°	85	-3	6
3	45.0° - 67.5°	78	0	10
4	67.5° - 90.0°	85	1	7
5	90.0° - 112.5°	85	2	5
6	112.5° - 135.0°	94	4	1
7	135.0° - 157.5°	94	0	0
8	157.5° - 180.0°	92	-1	2
9	180.0° - 202.5°	89	-1	6
10	202.5° - 225.0°	77	-1	12
11	225.0° - 247.5°	73	1	18
12	247.5° - 270.0°	78	7	10
13	270.0° - 292.5°	90	5	2
14	292.5° - 315.0°	85	9	-2
15	315.0° - 337.5°	85	6	-6
16	337.5° - 360.0°	88	-1	-4

Model:Ecoled Neon 3D 60k
 Tester:Sergio Caneros
 Temperature:27Deg
 Manufacturer:Luz Negra S.L.

Number: 10.289
 Date:2024-11-21 09:52:15
 Humidity:35%
 Remarks:100cm de Neón